

YEAR 2023

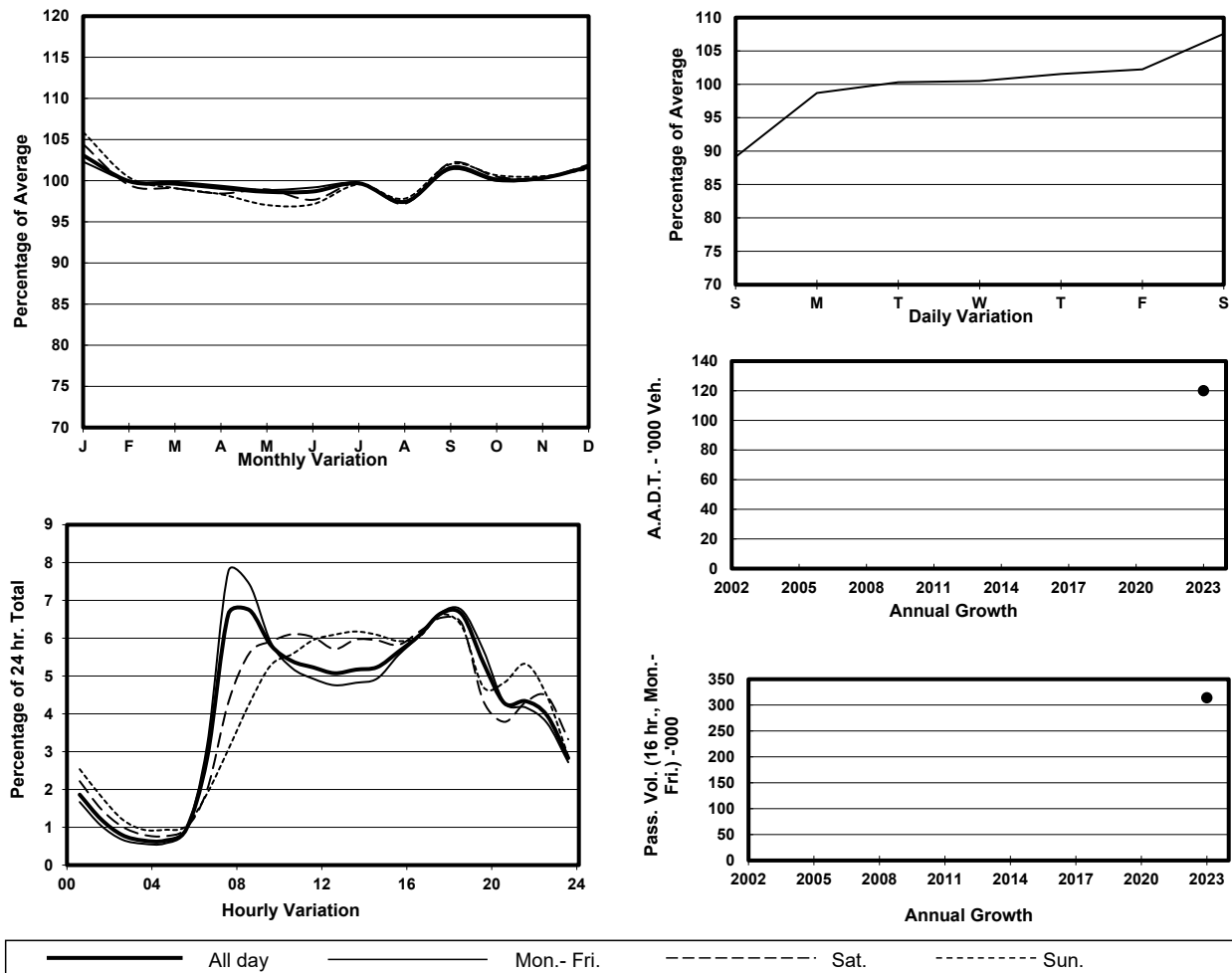
Location

Ma On Shan External Cordon(Man On Shan Area Boundary)

Stations on Cordon/Screenline

6222, 6225 and 6226

1. TRAFFIC FLOW VARIATION AND GROWTH



2. TRAFFIC CHARACTERISTICS (BY DIRECTION)

Parameter	All - Day	Mon. - Fri.	Sat.	Sun.
OUT BOUND				
A.A.D.T.	60480	61360	65280	53930
R 12 / 24 - %	72.2	72.7	72.4	68.6
R 16 / 24 - %	88.4	88.7	87.8	87
AM Peak Hour	0700-0800	0700-0800	0900-1000	0900-1000
One-way flow at AM peak hour	4660	5610	4160	3050
T - % (AM)	-	10.2	-	-
PM Peak Hour	1700-1800	1700-1800	1700-1800	1700-1800
One-way flow at PM peak hour	3890	3920	4210	3550
T - % (PM)	-	9.1	-	-
Prop.of commercial vehicles - 16 hr.	-	10.3	-	-
IN BOUND				
A.A.D.T.	59530	60130	64620	53950
R 12 / 24 - %	68.4	68.8	68.6	66.2
R 16 / 24 - %	88.1	88.6	87	86.5
AM Peak Hour	0800-0900	0700-0800	0900-1000	0900-1000
One-way flow at AM peak hour	3460	3830	3530	2660
T - % (AM)	-	13.2	-	-
PM Peak Hour	1800-1900	1800-1900	1700-1800	1700-1800
One-way flow at PM peak hour	4330	4580	4290	3600
T - % (PM)	-	6.7	-	-
Prop.of commercial vehicles - 16 hr.	-	10	-	-

3. OTHER INFORMATION AND COMMENT

Ma On Shan External Cordon
Year 2023

4. Vehicle classification and occupancy - Monday to Friday

Time		Class of vehicle									
		Motor Cycle	Private Car	Taxi	Private LB	PLB	Goods veh.		Non Fr. Bus	Fr. Bus	
							Light	M & H		SD	DD
0700-0800 Peak Hour	Pro	2.6	60.4	10.7	1.1	3.2	11.0	2.5	3.9	0.0	4.6
	Ocp	1.2	1.2	1.8	3.6	14.7	1.3	1.1	12.2	0.0	38.5
0800-0900	Pro	2.5	63.8	10.3	1.8	2.6	10.2	3.2	2.5	0.0	3.1
	Ocp	1.0	1.2	1.9	6.1	14.7	1.5	1.3	14.4	0.0	38.7
0900-1000	Pro	1.9	46.8	14.5	1.3	2.7	20.3	5.8	2.9	0.0	3.7
	Ocp	1.0	1.3	1.8	2.2	12.0	1.4	1.2	9.5	0.0	23.4
1000-1100	Pro	1.9	46.8	14.1	1.2	2.8	22.0	6.1	1.7	0.0	3.6
	Ocp	1.0	1.3	1.8	1.8	11.4	1.5	1.4	7.4	0.0	21.3
1100-1200	Pro	2.2	45.0	12.4	1.3	3.8	23.8	6.1	2.0	0.1	3.5
	Ocp	1.0	1.3	1.7	3.0	10.5	1.4	1.3	4.5	1.0	20.9
1200-1300	Pro	2.2	48.4	11.1	2.2	3.2	21.6	5.0	2.8	0.0	3.4
	Ocp	1.1	1.3	1.9	4.7	10.7	1.5	1.3	4.4	0.0	19.9
1300-1400	Pro	2.0	51.4	10.7	1.3	3.3	18.8	6.7	2.2	0.0	3.6
	Ocp	1.0	1.4	1.9	2.8	11.5	1.4	1.3	6.3	0.0	22.5
1400-1500	Pro	2.0	46.7	10.9	1.7	2.8	23.4	6.2	2.7	0.0	3.5
	Ocp	1.1	1.4	1.9	2.0	11.0	1.5	1.3	3.1	0.0	18.3
1500-1600	Pro	1.6	51.3	12.2	2.8	2.8	16.7	5.5	3.7	0.1	3.3
	Ocp	1.0	1.4	1.7	6.6	11.7	1.4	1.2	11.7	1.0	20.3
1600-1700	Pro	2.0	49.7	13.1	2.7	2.5	18.0	4.3	4.5	0.1	3.2
	Ocp	1.1	1.4	1.7	2.9	15.3	1.4	1.2	6.5	1.0	27.4
1700-1800	Pro	4.8	54.2	11.8	2.2	3.1	14.4	2.9	3.3	0.0	3.1
	Ocp	1.1	1.4	2.0	2.1	16.2	1.3	1.1	12.3	0.0	34.8
1800-1900	Pro	3.7	64.9	9.7	0.3	2.9	10.8	1.5	2.7	0.0	3.5
	Ocp	1.1	1.3	1.8	2.0	15.3	1.2	1.1	12.7	0.0	41.9
1900-2000	Pro	2.0	69.3	12.7	0.1	2.5	7.0	0.6	1.5	0.0	4.4
	Ocp	1.1	1.3	1.7	2.5	13.3	1.3	1.2	5.9	0.0	28.0
2000-2100	Pro	3.0	60.8	18.3	0.2	3.3	8.3	1.3	0.7	0.0	4.2
	Ocp	1.1	1.3	1.6	1.4	8.5	1.2	1.1	4.4	0.0	23.4
2100-2200	Pro	3.1	63.3	20.3	0.1	2.8	4.5	0.6	1.1	0.0	4.2
	Ocp	1.1	1.2	1.6	1.0	11.4	1.3	1.0	4.5	0.0	23.5
2200-2300	Pro	2.1	62.9	19.5	0.3	3.9	4.3	0.9	0.9	0.1	5.2
	Ocp	1.2	1.2	1.6	4.0	8.4	1.3	1.2	3.3	1.0	21.4
16 hours	Pro	2.5	55.6	12.8	1.4	3.0	14.7	3.7	2.6	0.1	3.7
	Ocp	1.1	1.3	1.8	3.7	12.6	1.4	1.2	9.1	1.0	27.7

Legend: Pro. Proportion of vehicles in % (Sum may not add up to 100% due to figure rounding)*

Ocp. Average occupancy of vehicles including both driver and passengers*

M&H Medium and Heavy

* All traffic data are collected from combined bounds